

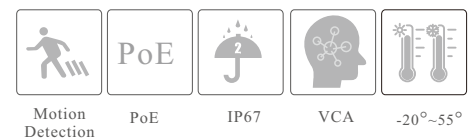
CAMERA

SM-IPN4410DL

4MP Dual Illumination Water-proof
Bullet Network Camera



- H.265+ /H.265 /H.264+ /H.264/MJPEG coding
- Max. resolution: 4MP (2560 × 1440)
- Auto day/night switch
- 3D DNR, WDR, HLC, BLC, etc.
- ROI coding
- Support smart supplement light
- 10~20m white light view distance; 10~20m IR view distance
- DC12V/PoE power supply
- IP 67 ingress protection
- Support dual streams
- Support remote monitoring by smart phones& tablet PCs with iOS and Android OS
- Support line crossing detection & region intrusion detection
- Support SMD

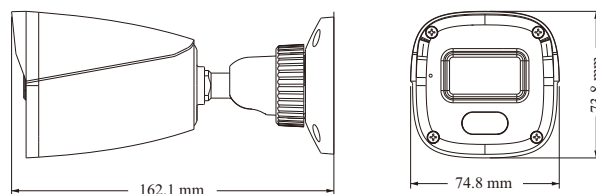


SPECIFICATIONS

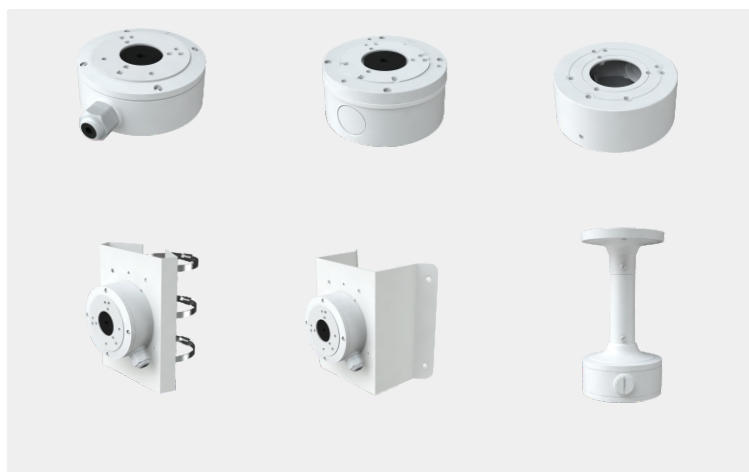
Specifications	Model	SM-IPN4410DL		
Camera				
Image Sensor	1 / 3 "CMOS			
Image Size	2560×1440			
Electronic Shutter	1 / 3s ~ 1 / 100000s			
Iris Type	Fixed Iris			
Min. Illumination	0.09 lux @F2.2, AGC ON; 0 lux (Illuminator on)			
Lens	3.6mm@F2.2, Horizontal FoV:74.5°;Vertical FoV:41.5°;Diagonal FoV:86.5°			
Focus	Fixed			
Lens Mount	M12			
Day&Night	ICR			
Wide Dynamic Range	Digital WDR			
BLC	Yes			
HLC	Yes			
Digital NR	Yes			
S/N Ratio	≥50dB			
Angle Adjustment	Pan: 0°~360°; Tilt:0°~80°;Rotation: 0°~360°			
DORI Distance				
Lens	Detect	Observe	Recognize	Identify
3.6mm	76m(249ft)	31m(102ft)	15m(49ft)	8m(26ft)
Image				
Video Compression	Main stream: H.265+ / H.265 / H.264 + / H.264 Sub stream: H.265+ / H.265 / H.264 + / H.264 / MJPEG			
H.265 Compression Standard	Main Profile@Leve4.1 High Tier			
Resolution	4MP (2560 × 1440), 3MP (2304 × 1296), 1080P (1920 × 1080), 720P (1280 × 720), D1, VGA (640×480), 480×240, CIF			
Main Stream	4MP/ 3MP/1080P/720P (60Hz: 1~30fps; 50Hz: 1~25fps)			
Sub Stream	D1/VGA/480×240/CIF (60Hz: 1~30fps; 50Hz: 1~25fps)			
Bit Rate	64 Kbps ~ 3 Mbps			
Bit Rate Type	VBR / CBR			
Audio Compression	G711A/U			
Image Settings	ROI, Saturation, Brightness, Hue, Contrast, Wide Dynamic, Sharpness, Image Mirror, Image Flip, NR, etc. adjustable through client software or web browser			
ROI	Each ROI to be configured separately			
Interfaces				
Network	RJ45			
Video Output	No			
Audio	1CH built-in MIC			
Storage	No			
Reset	No			
Functions				
Remote Monitoring	Web browser /NVR/NVMS2.X/Mobile APP			
Web Browser	IE 11 (plug-in required)/Chrome 89.0+/Edge 89.0+/Firefox 87.0+/Safari 14.0+			
Online Connection	Support simultaneous monitoring for up to 3 users; Support multi-stream real time transmission			
Network Protocol	UDP, IPv4, IPv6, DHCP, NTP, RTSP, 802.1x, HTTP			
Interface Protocol	ONVIF			
Storage	Network remote storage			
Motion Detection	Support smart motion detection; filtering motion alarm triggered by other target types except humans.			
Smart Event	(Human) region intrusion detection, (human)line crossing detection			
General Function	Watermark, video mask, heartbeat, corridor pattern			
Security	Video encryption, firmware encryption, configuration encryption, illegal login lock, IP address filtering, 802.1x authentication, basic and digest authentication for HTTP			

PoE	Yes, IEEE802.3af
Supplement Light Range	IR range: 10 ~ 20 m; white light range:10 ~ 20 m
Ingress Protection	IP67
Others	
Power Supply	DC12V/PoE
Power Consumption	< 5W
Operating Environment	- 20 °C ~ 55 °C (-4°F~131°F); Humidity: less than 95 % (non-condensing)
Storage Environment	- 20 °C ~ 60°C (-4°F~140°F), Humidity: less than 95 % (non-condensing)
Dimensions (mm)	162.1 × 74.8 × 73.8
Weight (net)	Approx. 0.25KG
Installation	Ceiling mounting; Wall mounting
Certificate	CE, FCC
Environmental Protection	Complies with Directive EU RoHS, WEEE(2012/19/EU) , directive 94/62/EC and REACH(EC1907/2006)

DIMENSIONS



AVAILABLE ACCESSORIES



AVAILABLE MODEL

Available Model	SM-IPN4410DL
-----------------	--------------