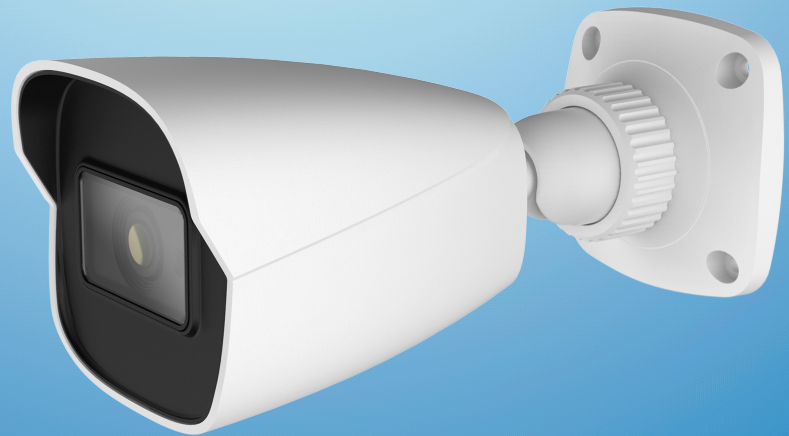
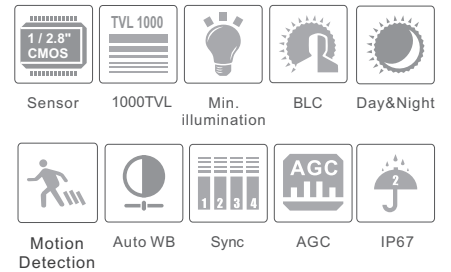


SM-AR4001

2MP HD Starlight IR Bullet Camera



- 1080P real time image, high definition, true color, starlight
- AHD / TVI / CVI standard and lossless video output
- Up to 1000 TVL resolution
- CMOS progressive scan, perfectly capture the moving object
- Support OSD menu
- High speed, long distance and real time transmission
- Auto color to B / W at low illumination
- Support ICR switch, true day / night
- Support noise reduction function
- 20 ~ 30m IR night view distance
- IP67 ingress protection
- Support COC
- Support 960H CVBS output

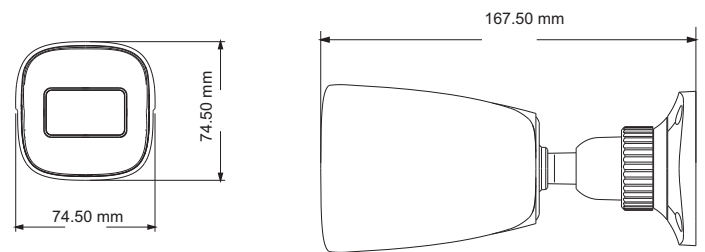


SPECIFICATIONS

| Model | SM-AR4001 |
|-----------------------|---|
| Specifications | |
| Camera | |
| Image Sensor | 1 / 2.8 "CMOS |
| Resolution | 2MP |
| Image Size | 1920x1080 |
| Video Output | AHD / TVI / CVI / CVBS |
| Image System | PAL / NTSC |
| Electronic Shutter | Auto; 1/25s~1/50000s(PAL); 1/30s~1/50000s(PAL) |
| IR Distance | 20 ~ 30 m |
| Frame Rate | 30fps(60Hz); 25fps(50Hz) |
| Min. Illumination | Color : 0.001 lux@F1.2, AGC ON; B/W : 0 lux with IR |
| Lens | 3.6 mm (2.8 mm optional) |
| Lens Mount | M12 |
| S / N Ratio | ≥52dB (AGC OFF) |
| Ingress Protection | IP 67 |
| Functions | |
| Function Control | OSD (COC Control) |
| Day & Night | ICR |
| WDR | Yes (120dB) |
| 3D NR | Yes |
| Global Exposure | No |
| Central Exposure | No |
| AGC | Yes |
| Auto White Balance | Yes |
| BLC | Yes |
| LSC | Yes |
| HLC | Yes |
| Freeze | Yes |
| Mirror | Yes |
| Defog | No |
| Sharpness | Yes |
| Smart IR | Yes |
| Motion Detection | Yes |
| Privacy Mask | Yes |
| Defect Correction | Auto |
| Language | 16 languages |
| Angle Adjustment | Pan: 0°~360°; Tilt: 0°~90°; Rotation: 0°~360° |
| Others | |
| Power Supply | DC12V (± 15%) |
| Power Consumption | IR OFF : < 1.5W; IR ON : < 4W |

| | |
|---------------------|--|
| Working Environment | - 30 °C ~ 50 °C, 10 % ~ 90 % (relative humidity) |
| Dimensions (mm) | 167.5 x 74. 5 x 74. 5 |
| Weight (net) | Approx. 0.37KG |

DIMENSIONS



AVAILABLE ACCESSORIES



AVAILABLE MODEL

| | |
|-----------------|-----------|
| Available Model | SM-AR4001 |
|-----------------|-----------|