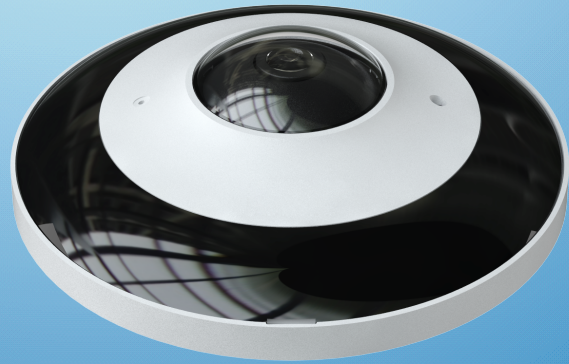


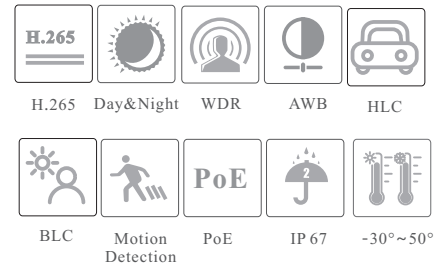
CAMERA

SM-IPNFE-6MP/H

6MP IR Water-Proof Fisheye Network Camera



- 6MP H.265 full real time coding
- Effective pixels: 2160 × 2160;
- ICR auto switch, true day / night
- 20 ~ 30m IR night view distance
- 3D DNR, digital WDR, HLC, BLC and ROI coding
- One CVBS output
- 1CH audio input, 1CH audio output, 1CH built-in MIC
- Built-in micro SD card slot, up to 256GB
- 1CH alarm input; 1CH alarm output
- DC12V/PoE power supply
- IP67 ingress protection
- Support three streams



SM-IPNFE-6MP/H

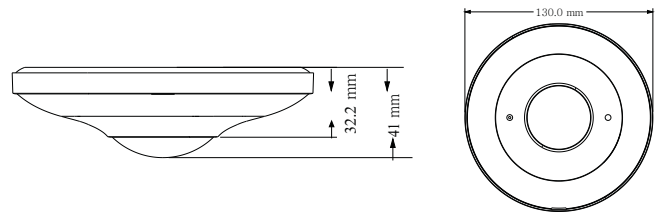
6MP IR Water-Proof Fisheye Network Camera

SPECIFICATIONS

Model	SM-IPNFE-6MP/H
Specifications	
Camera	
Image Sensor	1 / 2.9 "6MP progressive scan CMOS
Effective Pixels	2160×2160
Electronic Shutter	1 s ~ 1 / 100000 s
Min. Illumination	0.068lux@F2.0, AGC ON; 0 lux with IR
Lens	1.1mm @F2.0, horizontal field of view: 180° (desktop) 180° (ceiling mounting)
Day & Night	ICR
Wide Dynamic Range	Digital WDR
BLC	Yes
HLC	Yes
Digital NR	3D DNR
Defog	Yes
Compression Standard	
Video Compression	H.265 / H.264 / MJPEG
Encoding Type	VBR (five levels adjustable) / CBR
Smart Encoding	Support low bitrate, low delay; support ROI coding & SVC technology; support self-adaptive transmission bitrate as the network environment
Bit Rate	256 Kbps ~ 10 Mbps
Audio Compression	G711A / U
ROI	3 regions, each ROI can be configured separately
Image	
Resolution & Frame Rate	① Fisheye+panorama+3 PTZ 50Hz: 25fps@(2160 × 2160/1920×1920/1440×1440/960×960/480×480), 15fps@(1920 × 1080/704×576), 15fps@(960× 540/480×240)*3 60Hz: 30fps@(2160 × 2160/1920×1920/1440×1440/960×960/480×480), 15fps@(1920 × 1080/704×480), 15fps@(960 × 540/480×240)*3 ② Fisheye+4 PTZ 50Hz: 25fps@(2160 × 2160/1920×1920/1440×1440/960×960/480×480), 15fps@(960 × 540/480×240)*4 60Hz: 30fps@(2160 × 2160/1920×1920/1440×1440/960×960/480×480), 15fps@(960 × 540/480×240)*4
Image Settings	ROI, Saturation, Brightness, Hue, Contrast, Wide Dynamic, Sharpness, NR, Image Mirror, Image Flip, etc. adjustable through client software or web browser
Interfaces	
Network	RJ45
Video Output	CVBS output (BNC × 1)
Audio	1CH audio input; 1CH audio output; 1CH built-in MIC
Storage	Built-in micro SD card slot; up to 256GB
Hardware Reset	Yes
Alarm	1CH alarm input; 1CH alarm output
RS 485	Yes
Functions	
Remote Monitoring	IE browser/ NVR/Mobile APP/NVMS
Online Connection	Support simultaneous monitoring for up to 11 users; Support multi-stream real time transmission
Network Protocol	UDP, IPv4, IPv6, DHCP, NTP, RTSP, PPPoE, DDNS, SMTP, FTP, SNMP, UPnP, HTTP, HTTPS, 802.1x, QoS
Interface Protocol	ONVIF, GB-T/28181-2016
Storage	Network remote storage; micro SD card storage
Smart Alarm	Motion detection; SD card error, SD card full, IO alarm, cable disconnection, IP address conflict

General function	Watermark, IP address filtering, video mask, heartbeat, illegal login lock
PoE	Yes, IEEE802.3af
IR Distance	20 ~ 30 m
Ingress Protection	IP67
Others	
Power Supply	DC12V/PoE
Power Consumption	< 10.5W
Storage Environment	- 30 °C ~ 60 °C (-22°F~140°F); Humidity: less than 95 % (non-condensing)
Operating Environment	- 30 °C ~ 50 °C (-22°F~122°F); Humidity: less than 95 % (non-condensing)
Dimensions (mm)	Φ 130 × 41
Weight (net)	Approx. 0.45KG
Installation	Ceiling mounting(wall mounting available with the junction box and bracket)

DIMENSIONS



AVAILABLE ACCESSORIES



AVAILABLE MODEL

Available Model	SM-IPNFE-6MP/H
-----------------	----------------